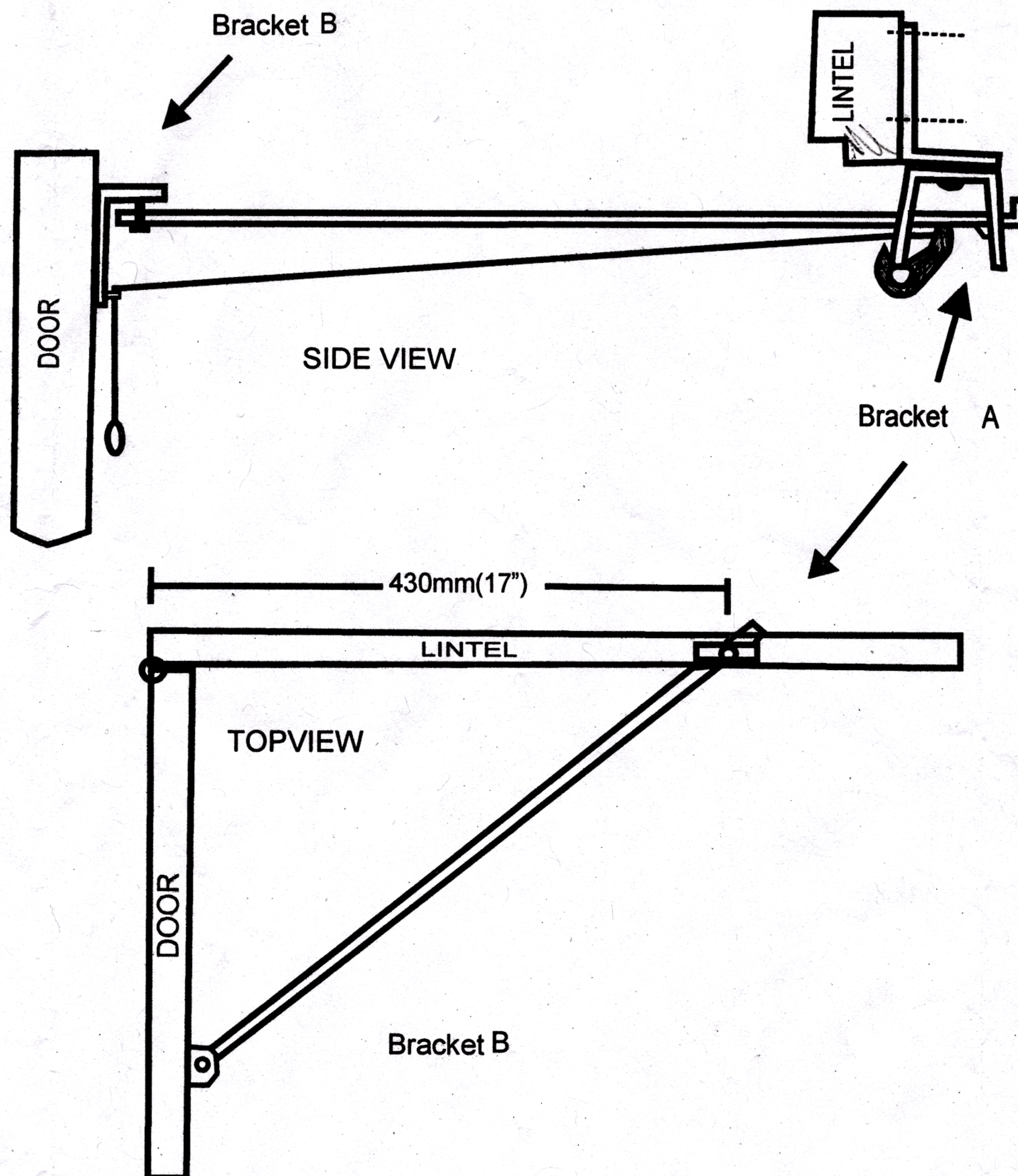


# N0. 1011 Senior Reliance

## Garage Door Holders

### For Narrow Lintels



### FIXING INSTRUCTIONS

- (1) Open the door to right angles.
- (2) Fix bracket 'A' to lintel at distance of 430mm (17") from the center of the hinge pin to the center of the swivel plate, as shown above.
- (3) Whilst the door is open at right angles Fix bracket 'B' to door. The bar must be horizontal.
- (4) Should the door be required to open wider than 90 degrees both brackets must be moved nearer the hinge.